


FISHWAY STATUS REPORT

Date: 7/18/2015
Inspection Period: 7/12/2015 thru 7/18/2015

All JD Fishways are inspected twice per day during fish season, Mar. 1 - Nov. 30
 Frequent monitoring of the PLC displays in SMF Fisheries Office as necessary.



**US Army Corps
of Engineers**
Portland District

JOHN DAY DAM
 JD/WC Project-Fisheries
 P.O. Box 823
 Rufus, Oregon 97050
 Phone: 541-506-7860

John Day Dam	Inspections	Criteria	Total Number of Inspections: 14	Temperature: 73 F
	Out of Criteria	Limit		Secchi: 6.0 Ft.
NORTH FISHWAY			4 out of 6 AWS pumps available since 12/23/14	
Exit differential	0	≤ 0.5'		
Exit Control weirs	0	High setting		
Count station differential	0	≤ 0.3'		
Weir crest depth (DS gauge)	0	1.3' ± 0.1'	Returned to 1.0' salmon passage setting on 7/15	
Entrance differential	0	1.0' - 2.0'	AVG 1.6	
SOUTH FISHWAY			3 AWS Turbines in regular service since 2/28/15	
Exit differential	0	≤ 0.5'		
Exit Control weirs	0	Mid Setting	Mid setting is normal for JDS	
Count station differential	0	≤ 0.3'		
Weir crest depth (US gauge)	0	1.3' ± 0.1'	Returned to 1.0' salmon passage setting on 7/15	
South entrance differential	0	1.0' - 2.0'	AVG 1.5	
Entrance weir SE1	0	depth (≥ 8')	AVG 8.5	
Collection channel velocity	0	1.5 - 4 fps	AVG 3.25	
N. Entrance PH(Bay 19)differential	0	1.0' - 2.0'	AVG 1.4	
Entrance weir NE1	0	depth (≥ 8')	AVG 8.4	
Entrance weir NE2	0	depth (≥ 8')	AVG 8.4	
JUVENILE PASSAGE			Elevated smolt mortalities in daily sampling have dropped back to normal levels (0.0%)	
Forebay/bypass conduit differential	0	4.0' - 5.0'	AVG 4.6	
Submersible traveling screens	0	visual inspect		
Turbine trashrack drawdown	0	<1.5', wkly		
Vert barrier screen drawdown	0	<1.5', wkly		
Spill volume	0	30/40 %	Fish spill and TSWs' operation continues since 4/10/15 per FOP	
Spill pattern	0	per FPP	Per 2015 FOP	
Turbine Unit Priority	0	per FPP		
Turbine 1% Efficiency	0	per FPP		

SMOLT MONITORING FACILITY

Operation:

SMF in bypass mode beginning 6/28 @ approximately 11am. Mon & Thurs sampling resumes for 6 hours (7am-1pm)

JD Fisheries crew continues 24/7 swing shift schedule as required by FPP; it will continue this until the end of sampling season on 9/15.

The High Mortality rates observed since 6/7 (1.1%) and peaking on 6/27 (15%) have subsided the last sample had 0.0% mortality. Cause unknown

Debris load: very little debris.

Maintenance:

All devices working well without any issues at this time

Research:

None

Fallbacks: AVG: 13 MAX: 16 MIN: 9

OTHER JOHN DAY ISSUES:

Birds :

see the Avian Numbers tab. We report all species and locations, but in reality only gulls in the tailrace BRZ are relevant at JD.

Very few Gulls at the moment, but Pelicans have been increasingly penetrating the JD tailrace BRZ ; feeding primarily on the south edge of spill.

USADA avian hazing from a boat began 4/16. Typical hazing shifts are 06:00 - 14:30

The following avian lines have snapped this season and are out of commission; 44, 46, 56, and 60. Line 55 snapped 7/17 bringing the total snapped lines to 7 (lines 25 and 26 have been out of commission since 2013) 118 lines remain. Planning to replace in September/October

Avian predation continues minimal/ insignificant.

Operations:

JD North Fishway in regular service; 5 out of 6 AWS pumps are available. Repair work on pump 4 continues; pump 3 has vibration issues and should be the last last in service.

JD South Fishway in regular service with 3 AWS Turbines; it is meeting the optimal FPP criteria.

MU Gatewell Drawdowns: Differentials are checked Wednesdays and Sundays; all gatewells were in criteria.

Maintenance:

JD North AWS pumps: four out of total six are available. Repair of AWS pump # 4 by a contractor started on 1/26 & is ongoing.

Calibration: All gauges/ sensors are within the criteria of 0.3' .

Research:

2015 Adult Fish Counting by Normandeau Associates commenced on 1 April, 2015 and will continue daily through 1 November.

Lamprey trapping and collection of adults & juveniles for various tribal and non-tribal studies commenced in the last week of June

Dam angling to remove NPM from JD PH tailrace, by a crew from Washington F&W underway. 2,055 season total as of 6/27.

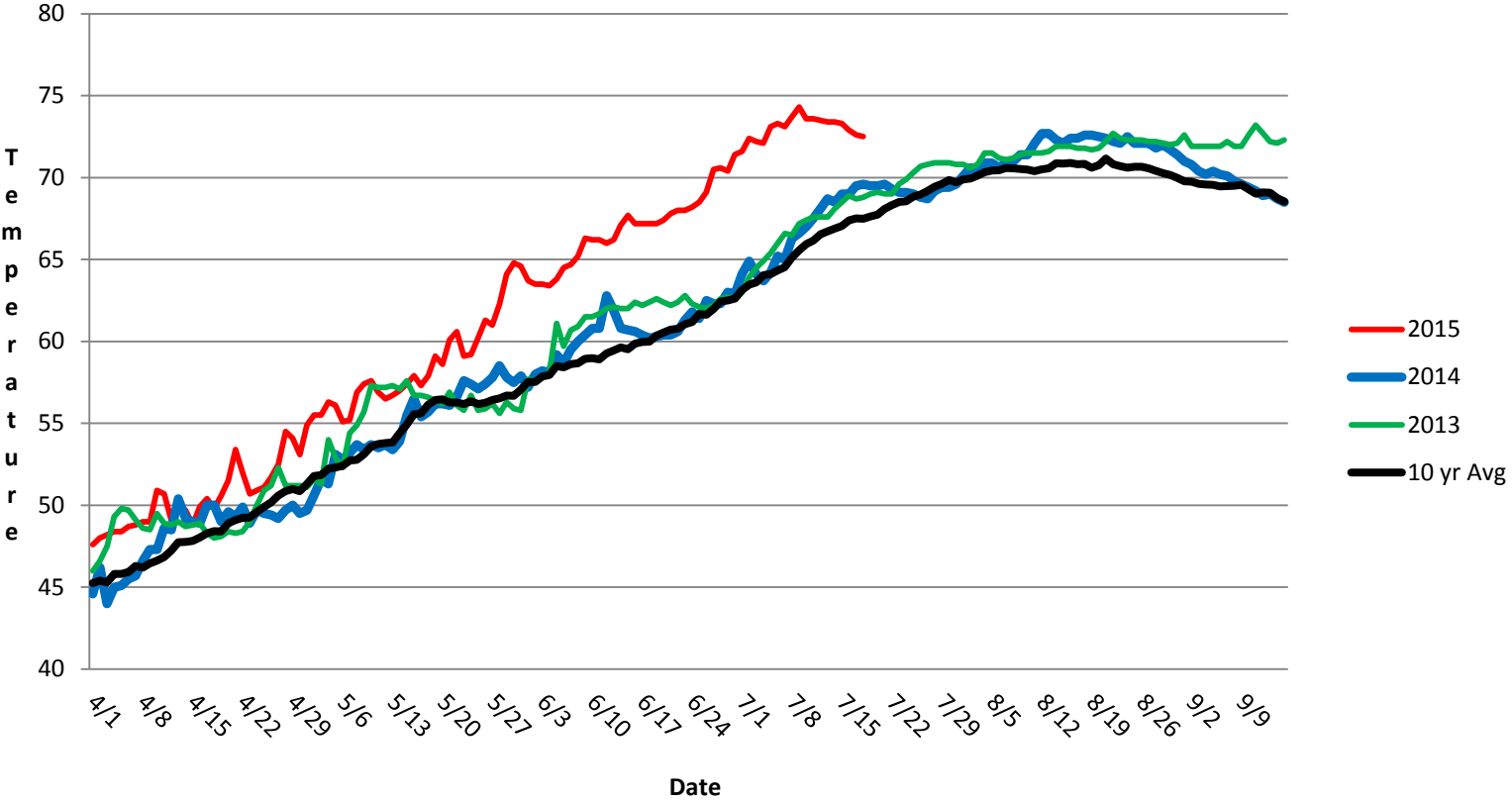
Proposal by PSMFC to install Adult PIT antennas at both JD Fishways is pending; possible installation during the next winter maintenance season 2015/16.

JD North LPS experimental operation ceased after its submersible pump (water supply) was found failed on 6/23. FFU coordinates for its repairs.

Kevin Moynahan
OPM John Day/Willow Creek Project

Date: July 18, 2015

JDA SMF Water Temp



JDA Collection Channel Velocity

Date 18-Jul-15

By: pete

Bay(s)	Time	Sec.	Velocity (f/s)
0-2	1:24	84	2.14
2 - 4	2:18	138	3.33
4 - 6	3:12	192	3.33
6 - 8	4:07	247	3.27
8 - 10	5:01	301	3.33
10 - 12	5:59	359	3.10
12 - 14	6:57	417	3.10
14 - 16	7:55	475	3.10
16 - 18	8:35	515	4.50
			3.25

JDA Bird Counts: 7/12/15 to 7/18/15

F(1): Forage AM survey F(2): Forage PM Survey NF(1): Non-Forage AM Survey NF(2): Non-Forage PM Survey

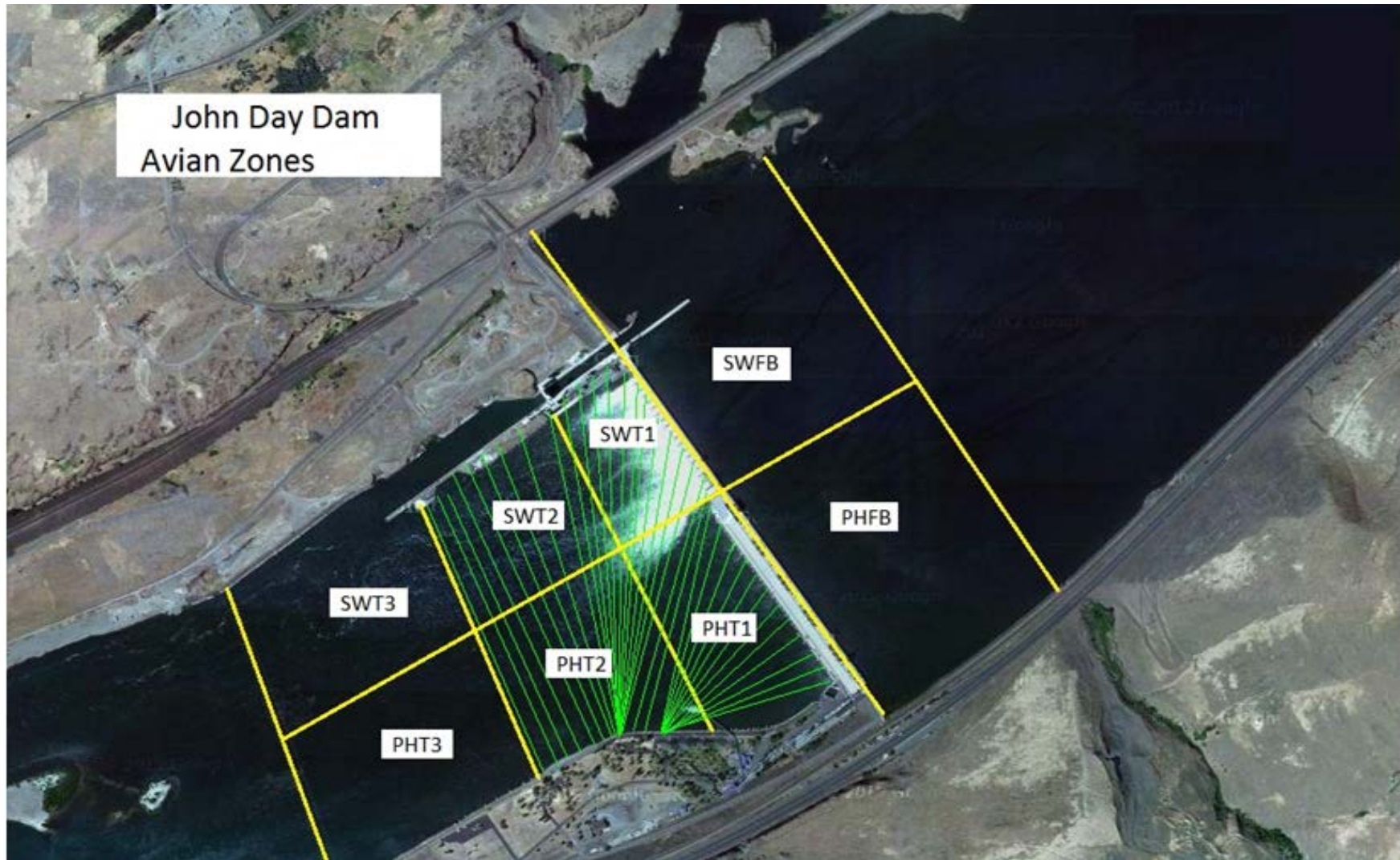
Date	Zone	Gulls				Cormorant				Caspian tern				White Pelican				Grebe				Total
		F(1)	F(2)	NF(1)	NF(2)	F(1)	F(2)	NF(1)	NF(2)	F(1)	F(2)	NF(1)	NF(2)	F(1)	F(2)	NF(1)	NF(2)	F(1)	F(2)	NF(1)	NF(2)	
12-Jul	PHFB	0	0	0	2	0	0	0	0	0	0	0	0	0	0	0	0	0	0	12	22	36
12-Jul	SWFB	0	0	0	0	0	0	0	0	0	0	0	0	0	0	0	0	0	0	0	0	0
12-Jul	PH1	2	0	0	0	0	0	0	0	0	0	0	0	0	0	0	0	0	0	0	0	2
12-Jul	PH2	3	0	0	0	0	0	0	0	0	0	0	0	0	0	0	0	0	0	0	0	3
12-Jul	PH3	5	16	0	0	0	0	0	0	0	0	0	0	0	0	0	0	0	0	0	0	21
12-Jul	SW1	0	0	0	0	0	0	0	0	0	0	0	0	0	0	0	0	0	0	0	0	0
12-Jul	SW2	0	0	0	0	0	0	0	0	0	0	0	0	0	0	0	0	0	0	0	0	0
12-Jul	SW3	3	7	0	0	0	0	0	0	0	0	0	0	0	0	1	0	0	0	0	0	11
Avg/Survey		18		1		0		0		0		0		0		1		0		17		73
13-Jul	PHFB	0	0	0	2	0	0	0	0	0	0	0	0	0	0	8	4	12	18			44
13-Jul	SWFB	0	0	0	0	0	0	0	0	0	0	0	0	0	0	0	0	0	0			0
13-Jul	PH1	0	0	0	1	0	0	0	0	0	0	0	0	0	0	0	0	0	0			1
13-Jul	PH2	7	0	0	5	0	0	0	0	0	0	0	0	14	4	0	0	0	0			30
13-Jul	PH3	11	0	0	0	0	0	0	0	0	0	0	0	21	0	0	0	0	0			32
13-Jul	SW1	0	0	0	0	0	0	0	0	0	0	0	0	0	0	0	0	0	0			0
13-Jul	SW2	0	0	0	0	0	0	0	0	0	0	0	0	7	0	0	0	0	0			7
13-Jul	SW3	0	0	0	0	0	0	0	0	0	0	0	0	8	0	28	11	0	0			47
Avg/Survey		9		4		0		0		0		0		27		20		6		15		161
14-Jul	PHFB	3	0	0	0	0	0	0	0	0	0	0	0	0	0	6	0	19	17			45
14-Jul	SWFB	0	0	0	29	0	0	0	0	0	0	0	0	0	0	0	0	0	0			29
14-Jul	PH1	2	0	0	0	0	0	0	0	0	0	0	0	6	0	0	0	0	0			8
14-Jul	PH2	2	0	0	0	0	0	0	0	0	0	0	0	2	0	0	8	0	0			12
14-Jul	PH3	3	2	0	0	0	0	0	0	0	0	0	0	18	0	0	4	0	0			27
14-Jul	SW1	0	0	0	0	0	0	0	0	0	0	0	0	0	0	0	0	0	0			0
14-Jul	SW2	0	0	0	0	0	0	0	0	0	0	0	0	0	0	0	0	0	0			0
14-Jul	SW3	7	0	0	0	0	0	0	0	0	0	0	0	21	0	31	0	0	0			59
Avg/Survey		10		15		0		0		0		0		24		22		3		18		180
15-Jul	PHFB	0	0	0	0	0	1	0	0	0	0	0	0	0	0	4	5	12	12			34
15-Jul	SWFB	0	0	6	19	0	0	0	0	0	0	0	0	0	0	0	0	0	0			25
15-Jul	PH1	0	0	8	0	0	0	0	0	0	0	0	0	0	0	0	0	0	0			8
15-Jul	PH2	0	0	0	0	0	0	0	0	0	0	0	0	0	0	0	0	0	0			0
15-Jul	PH3	0	0	0	0	0	0	0	0	0	0	0	0	2	0	0	0	0	0			2
15-Jul	SW1	0	0	0	3	0	0	0	0	0	0	0	0	0	0	0	0	0	0			3
15-Jul	SW2	0	0	0	2	0	0	0	0	0	0	0	0	0	0	0	0	0	0			2
15-Jul	SW3	9	5	0	0	0	0	0	0	0	0	0	0	5	0	0	0	0	0			19
Avg/Survey		7		19		1		0		0		0		4		0		5		12		93

JDA Bird Counts: 7/12/15 to 7/18/15

F(1): Forage AM survey F(2): Forage PM Survey NF(1): Non-Forage AM Survey NF(2): Non-Forage PM Survey

Date	Zone	Gulls				Cormorant				Caspian tern				White Pelican				Grebe				Total
		F(1)	F(2)	NF(1)	NF(2)	F(1)	F(2)	NF(1)	NF(2)	F(1)	F(2)	NF(1)	NF(2)	F(1)	F(2)	NF(1)	NF(2)	F(1)	F(2)	NF(1)	NF(2)	
16-Jul	PHFB	0	0	1	1	0	0	0	0	0	0	0	0	0	0	0	0	2	2	10	11	27
16-Jul	SWFB	0	0	0	0	0	0	0	0	0	0	0	0	0	0	0	0	0	0	0	0	0
16-Jul	PH1	0	0	0	1	0	0	0	0	0	0	0	0	0	0	0	0	0	0	0	0	1
16-Jul	PH2	0	0	0	0	0	0	0	0	0	0	0	0	0	0	0	0	0	0	0	0	0
16-Jul	PH3	0	0	0	0	0	0	0	0	0	0	0	0	0	0	0	0	0	0	0	0	0
16-Jul	SW1	0	0	2	0	0	0	0	0	0	0	0	0	0	0	0	0	0	0	0	0	2
16-Jul	SW2	0	0	0	0	0	0	0	0	0	0	0	0	0	0	0	0	0	0	0	0	0
16-Jul	SW3	5	15	0	4	0	0	0	0	0	0	0	0	0	0	0	0	0	0	0	0	24
Avg/Survey		10		5		0		0		0		0		0		0		2		11		54
17-Jul	PHFB	0	0	0	1	0	0	0	0	0	0	0	0	0	0	0	0	1	2	9	8	21
17-Jul	SWFB	0	0	5	0	0	0	0	0	0	0	0	0	0	0	0	0	0	0	0	0	5
17-Jul	PH1	0	0	0	0	0	0	0	0	0	0	0	0	0	0	0	0	0	0	0	0	0
17-Jul	PH2	0	0	0	0	0	0	0	0	0	0	0	0	0	0	0	0	0	0	0	0	0
17-Jul	PH3	0	0	0	0	0	0	0	0	0	0	0	0	0	0	0	0	0	0	0	0	0
17-Jul	SW1	0	0	1	1	0	0	0	0	0	0	0	0	0	0	0	0	0	0	0	0	2
17-Jul	SW2	0	0	0	0	0	0	0	0	0	0	0	0	0	0	0	0	0	0	0	0	0
17-Jul	SW3	1	6	9	0	0	0	0	0	0	0	0	0	0	45	0	0	0	0	0	0	61
Avg/Survey		4		9		0		0		0		0		23		0		2		9		89
18-Jul	PHFB	0	0	0	0	0	0	0	0	0	0	0	0	0	0	0	0	3	3	9	6	21
18-Jul	SWFB	0	0	0	0	0	0	0	0	0	0	0	0	0	0	0	0	0	0	0	0	0
18-Jul	PH1	0	0	0	0	0	0	0	0	0	0	0	0	0	0	0	0	0	0	0	0	0
18-Jul	PH2	0	0	0	0	0	0	0	0	0	0	0	0	0	0	0	0	0	0	0	0	0
18-Jul	PH3	0	0	0	0	0	0	0	0	0	0	0	0	0	0	0	0	0	0	0	0	0
18-Jul	SW1	0	0	1	1	0	0	0	0	0	0	0	0	0	8	0	0	0	0	0	0	10
18-Jul	SW2	0	0	0	0	0	0	0	0	0	0	0	0	0	4	0	0	0	0	0	0	4
18-Jul	SW3	17	17	0	0	0	0	0	0	0	0	0	0	40	40	0	0	0	0	0	0	114
Avg/Survey		17		1		0		0		0		0		46		0		3		8		149
Totals	Gulls				Cormorant				Caspian tern				White Pelican				Grebe				Total	
	F	NF	F	NF	F	NF	F	NF	F	NF	F	NF	F	NF	F	NF	F	NF				
Weekly Total	148	105	1	0	0	0	0	0	245	83	40	177	799									
Avg/Survey	11	8	0	0	0	0	0	0	18	6	3	13	57									

John Day Dam
Avian Zones



John Day Weekly Averages

	Temp:	Secchi:	Fallbacks
Sun	74	6.0	16
Mon	73	6.0	Bypass
Tues	73	6.0	Bypass
Wed	73	6.0	Bypass
Thur	73	6.0	9
Fri	73	6.0	Bypass
Sat	73	6.0	Bypass
AVG:	73	AVG: 6.0	AVG 13
			MAX 16
			MIN 9

	NE1	NE2	S.Ent	SE1	N.Ent	JBS Diff	Bay19
Sun	8.4	8.4	1.6	8.6	1.7	4.5	1.5
Sun	8.5	8.5	1.7	8.5	1.6	4.6	1.5
Mon	8.3	8.5	1.6	8.6	1.6	4.6	1.5
Mon	8.6	8.6	1.4	9.2	1.4	4.6	1.5
Tues	8.8	8.8	1.9	8.8	1.5	4.5	1.4
Tues	9.0	9.0	1.4	9.1	1.4	4.5	1.4
Wed	8.0	8.2	1.6	8.2	1.7	4.9	1.6
Wed	8.8	8.7	1.7	8.3	1.5	4.6	1.4
Thur	8.0	8.1	1.6	8.4	1.5	4.6	1.4
Thur	8.3	8.2	1.5	8.1	1.5	4.6	1.3
Fri	8.3	8.2	1.3	8.4	1.6	4.6	1.4
Fri	8.3	8.2	1.5	8.0	1.8	4.6	1.3
Sat	8.5	8.3	1.4	8.1	1.5	4.6	1.3
Sat	8.3	8.3	1.3	8.1	1.6	4.5	1.4
AVG:	8.4	8.4	1.5	8.5	1.6	4.6	1.4